



[www.BuildingStapleton.com](http://www.BuildingStapleton.com)

# The Platte House

The Town & Country Homes at Stapleton

True to its heritage, yes. Stodgy and impractical, no.



Victorian



Victorian with upgrade



Craftsman with upgrade

Although just about everybody loves old houses, the relationship is a troubled one. The basic problem is that fish-scale shingles, Craftsman columns and big porches are loveable – dark little rooms, teensie closets and iffy wiring are not. In that light, you can think of the Platte House as the result of good counseling. It has loads of traditional charm inside and out. But the rooms are bright, the wiring is modern and the closets ... well, let's just say that the one in the master bedroom might have qualified as a bedroom itself in an old house.

The Platte House, Plan 6630  
2,511 finished square feet  
4 bedrooms  
2.5-3.5 baths  
2-3 car garage



**MCSTAIN**<sup>®</sup>  
NEIGHBORHOODS

- 1 A two-story living room made even more beautiful by the staircase on one side and, in the Victorian version, a bay window on the other.
- 2 You may opt to turn either the living room or dining room into a study.
- 3 The space above the living room can become a loft or fourth bedroom.
- 4 An upper-level laundry keeps you from toting clothes up the stairs. Then again, an optional 3rd full bath in this space could minimize morning traffic jams.
- 5 This spacious secondary bedroom can become an equally spacious master sitting room.
- 6 Think how much more camping gear you could stow with the optional full basement.

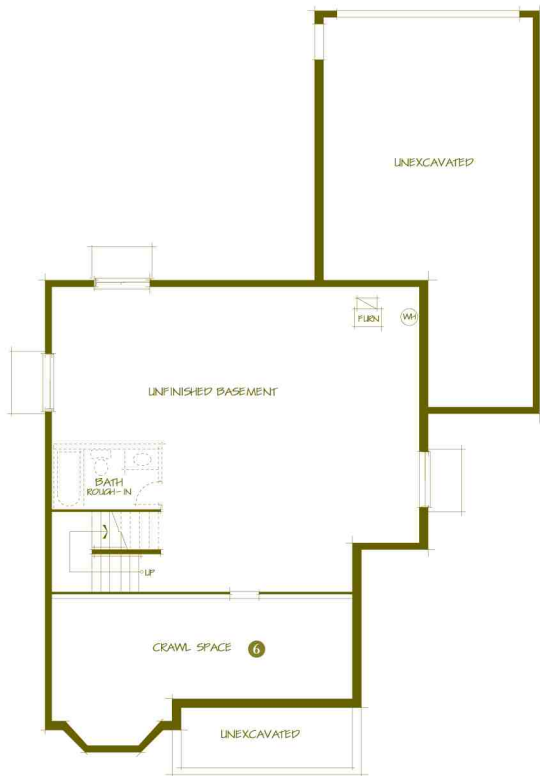
The Platte House, Plan 6630  
 2,511 finished square feet  
 4 bedrooms  
 2.5-3.5 baths  
 2-3 car garage



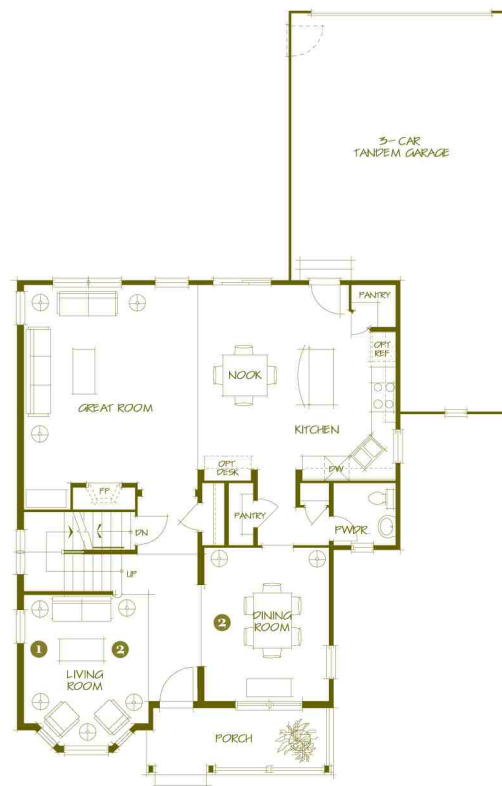
**McSTAIN**<sup>®</sup>  
 NEIGHBORHOODS

## Platte House

The Town & Country Homes at Stapleton



LOWER LEVEL



MAIN LEVEL



UPPER LEVEL



[www.BuildingStapleton.com](http://www.BuildingStapleton.com)

Illustrations are artists' conceptions. Dimensions and scale are approximate. Specification, landscaping, amenities, color palette and other features depicted or described are preliminary and therefore subject to change without notice. Window configuration and square footage may vary per elevation. A 2-car detached garage is standard on each home. Placement of the garage varies per home site, and some sites will accommodate 3-car garage. The Town & Country Homes, Stapleton by McStain Neighborhoods (2/05).

McStain Neighborhoods<sup>®</sup> and its tagline, "We're on a mission here."<sup>®</sup> are registered trademarks or servicemarks of McStain Enterprises, Inc. © McStain Enterprises, Inc., 2005, all rights reserved.