



**This Built to Order™ floor plan features three elevations to choose from.**



Katonah

## STAPLETON PLAN 2084

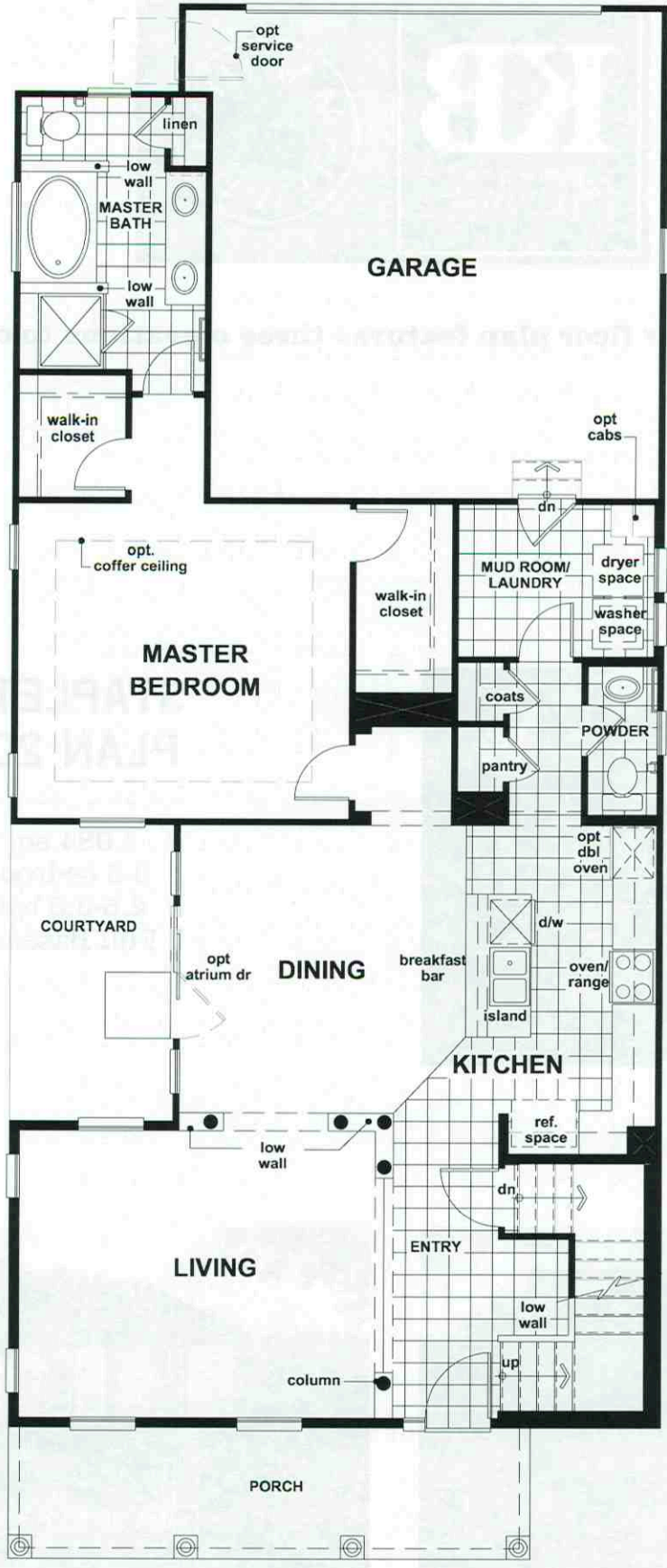
2,084 sq. ft.  
3-5 bedrooms  
2.5-3.5 baths  
Full Basement



Lily Pond



Skylands



FIRST FLOOR

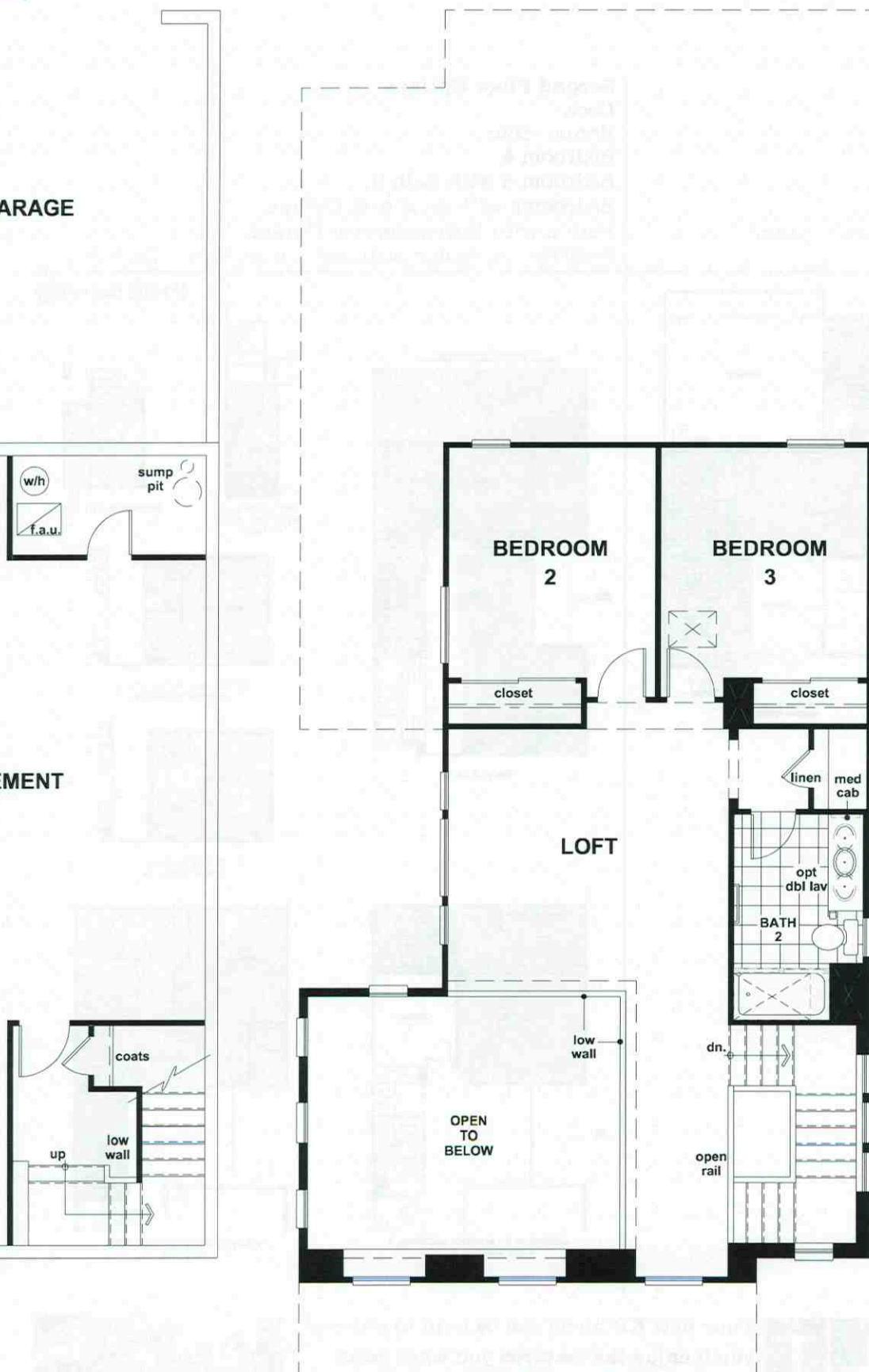
BASEMENT

© 2008 KB Home. © 2007 Martha Stewart Living Omnimedia, Inc. All rights reserved. KB Home reserves the right to change floor plan specifications, prices financing, terms and availability without prior notice and may treatments and many other items featured in and around the model homes are decorator suggested, are not included in the purchase price and are not available for purchase from KB Home. Windows, columns, porch landscaping shown is not standard. See Built to Order™ options and upgrades offered at KB Home Studio. All options/upgrades require additional charges, may require ordering at predetermined stages of construction Opportunity.

GARAGE

BASEMENT

MENT



SECOND FLOOR

This Built to Order floor plan features various upgrades and options that give you the power to personalize your new home to meet your needs.

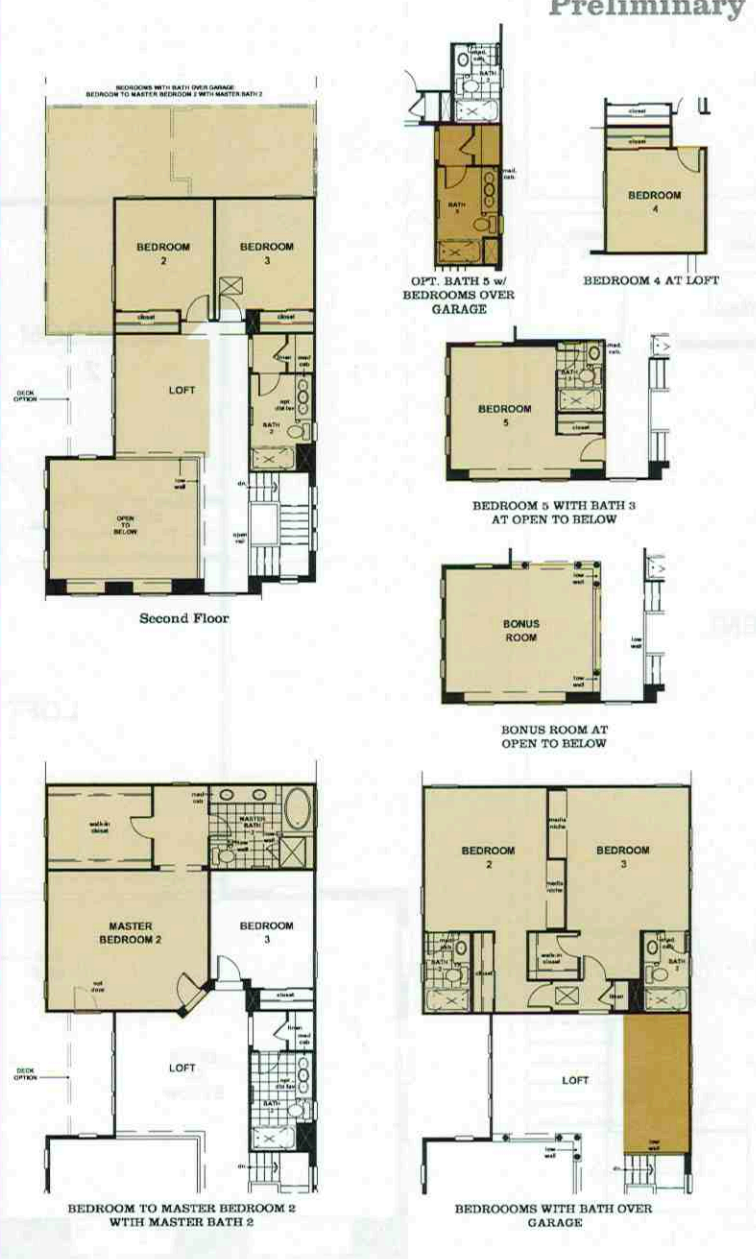
### First Floor Options

- Fireplace
- Extended garage
- Enhanced porch
- Covered patio
- Family Room to Master Bedroom
- (Only available w/ Master Bedroom 2 option)



### Second Floor Options

- Deck
- Bonus room
- Bedroom 4
- Bedroom 5 with Bath 3
- Bedrooms with Bath over Garage
- Bath 5 with Bedrooms over Garage
- Bedroom to Master Bedroom 2 with Master Bath 2



Your new KB home can be built to order so you'll enjoy the features you want most. Plus you can choose from a variety of personalizing interior features and details at KB Home Studio. Select appliances, cabinets, countertops, lighting, flooring and more. Everything you need to create a home as unique as you.

